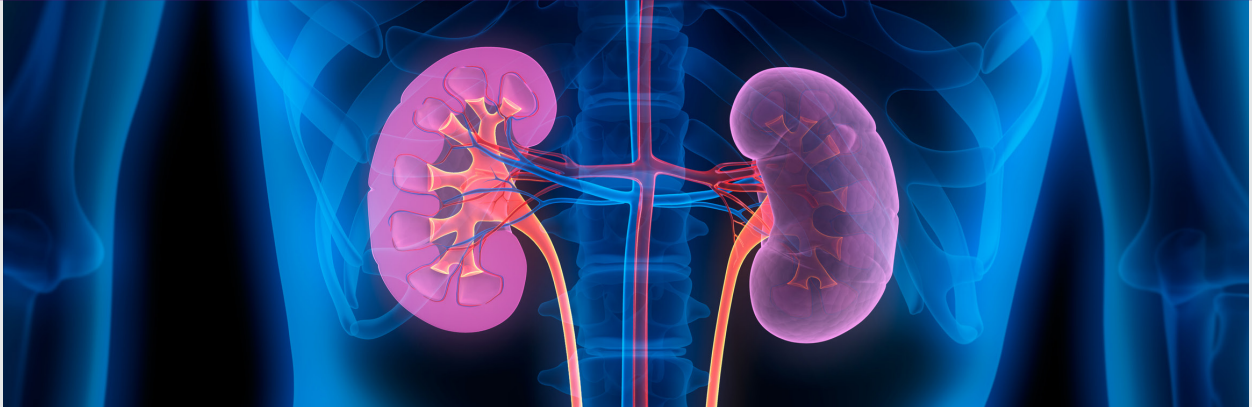


International Consensus Guideline on Anticancer Drug Dosing in Kidney Dysfunction (ADDIKD)

CONSULTATION OPEN



eviQ and the Cancer Institute NSW have led the development of a new clinical guideline, *International consensus guideline for anticancer drug dosing in kidney dysfunction (ADDIKD)*.

Aim of the guideline

- Anticancer drug dosing recommendations in kidney dysfunction are often empirical, dependent on kidney function calculations based on non-standardised creatinine assays and lack applicability to globally accepted kidney dysfunction classifications.
- This guideline provides a practical, evidence-based and standardised approach to the assessment of kidney function in cancer patients and its application to anticancer drug dosing. It aims to be a decision support tool for cancer clinicians.

Guideline development

- ADDIKD has been developed by an international, multidisciplinary working party, which includes expert medical oncologists, haematologists, nephrologists, pharmacists, clinical pharmacologists and guideline development specialists.
- The guideline has three consensus recommendations, which provide the basis for formulating the dosing recommendations for 59 anticancer drugs.

Consultation

- eviQ and the Cancer Institute NSW invite interested parties to comment on the **draft guideline**.
- Consultation period will close **midnight (AEST) 31st May 2022**.

If you have any questions, please contact Geeta Sandhu on Geetpal.Sandhu@health.nsw.gov.au



Please scan the QR code and have your say!